



**Halsey Taylor**  
Satisfying Thirsts Since 1912

# Freeze-Resistant Contour™ Face-Mounted

## Fountain With Back Panel

MODEL:  HRFSBPFR



This fountain is **Classified by Underwriters Laboratories, Inc. in accordance with ANSI/NSF 61, Section 9 - 1997b.**

### GENERAL

Face-mounted fountain, one-piece, non-corrosive stainless steel number 300 series with brushed satin finish. Contour-formed basin with softly rounded corners and edges reduces splatter, insures proper drainage and prevents standing waste water.

### FREEZE-RESISTANT VALVE SYSTEM

Freeze-resistant system features box that installs behind non-freezing wall for housing water connection from the stop to the strainer.

### BUBBLER

Vandal-resistant bubbler is one-piece, chrome-plated, and is secured to fountain with anti-rotation mounting system. Unit has integral hood guard design to prevent contamination from other users, airborne deposits and tampering.

### PUSHBUTTON ACTUATION MECHANISM

Self closing, vandal-resistant pushbutton does not require grasping or twisting.

### PANEL

Constructed of stainless steel, number 300 series with satin finish.

### AUTOMATIC STREAM HEIGHT REGULATOR

Self-closing assembly is located inside unit to prevent tampering. Unit resists corrosion and liming. A constant stream height is automatically maintained under line pressures that vary from 20 to 105 psi.

### INLET STRAINER

Easily cleaned in-line strainer screen traps particles of 140 microns or larger before they enter the waterway.

### WATER INLET

3/8" O.D. Tubing into freeze-resistant box.

### DRAIN OUTLET

1-1/4" waste outlet located in freeze-resistant valve system.

### SUGGESTED SPECIFICATIONS

Fountain shall include pushbutton on the front, contour-formed basin to eliminate splashing and standing water, and shall have rounded corners and edges. Projector shall be chrome plated vandal-resistant type with integral hood guard and anti-squirt feature. The manufacturer shall certify the unit to meet the requirements of ANSI/NSF 61, Section 9 and the Safe Drinking Water Act.

Note: Continued product improvement makes specifications subject to change without notice.



Standard finish is Stainless Steel

### Optional Accessories (extra cost)

Cane Apron

Each HRFSBPFR consists of 2 cartons of the following:

Fountain, Panel and Misc. Parts  
Freeze-Resistant Valve System

Service stop not furnished.

Shipping weight: 50 lbs.



www.halseytaylor.com

HALSEY TAYLOR, 2222 CAMDEN COURT, OAK BROOK, ILLINOIS 60523

# Freeze-Resistant Contour™ Face-Mounted Fountain With Back Panel

(CONTINUED)

## MOUNTING INSTRUCTIONS

Refer to diagrams for rough-in of freeze-resistant system and plumbing. Mount wall plate assembly to wall per the installation instructions. Hang fountain panel over the wall plate assembly. Attach fountain to wall plate assembly. Water service line and waste line are to be assembled as required. Final check for leaks and correct functions of fountain should be made. (For details see the installation instructions.)

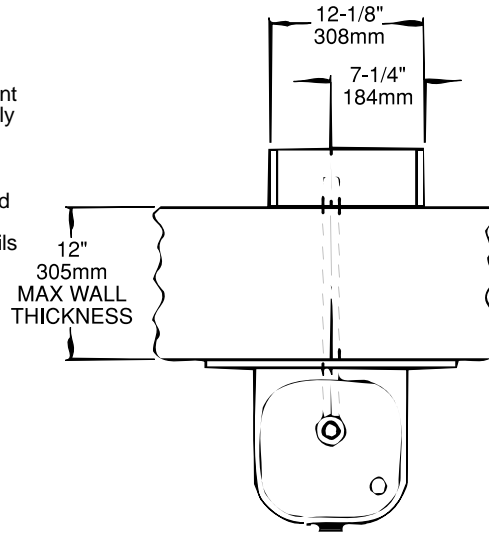
**CAUTION** — Fountain must be securely bolted to wall.

## OPERATING PRESSURES

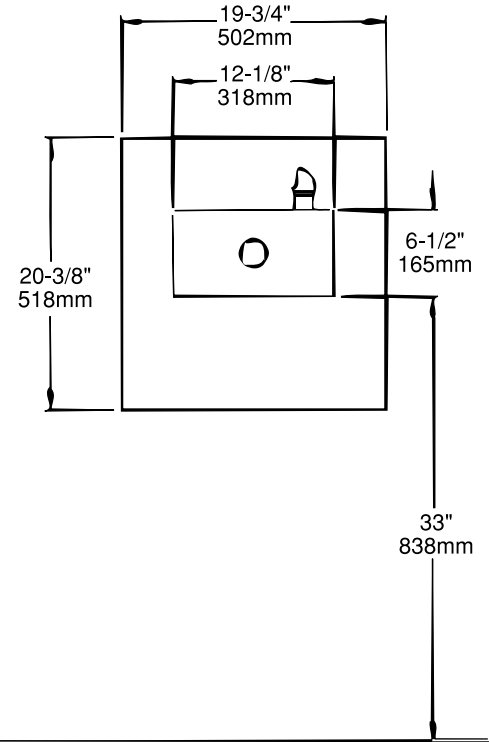
Supply water-105 psi maximum

NOTE: A service supply stop must be installed at the fountain inlet line.

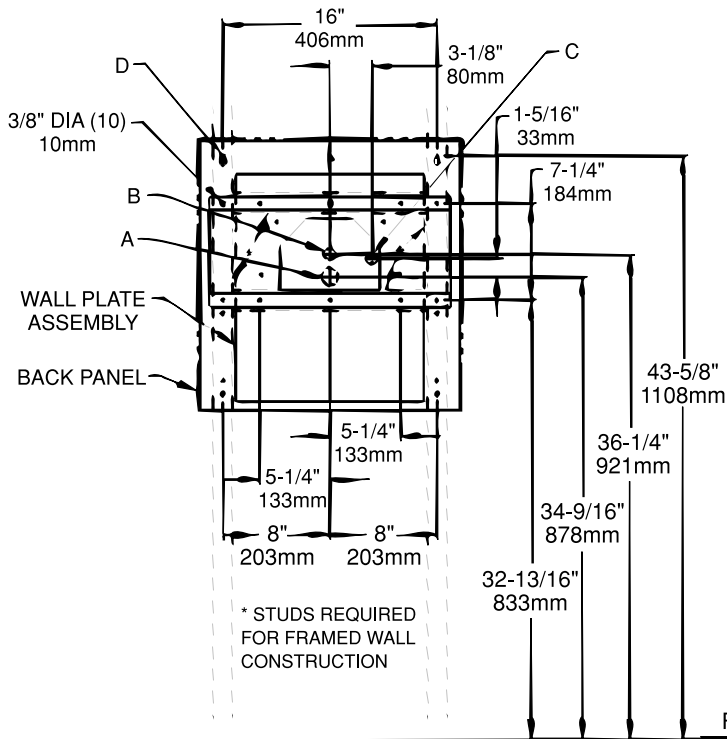
TOP VIEW



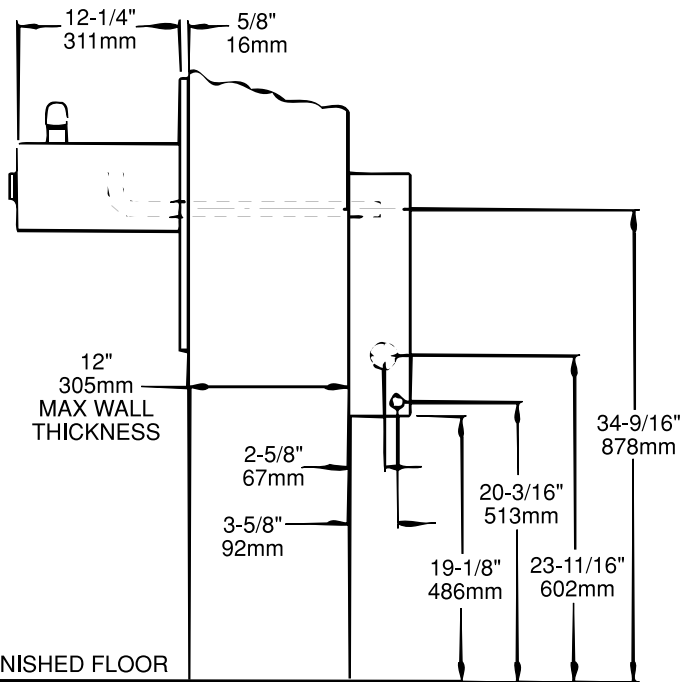
FRONT VIEW



WALL LAYOUT



SIDE VIEW



**LEGEND:**

- A = 1-3/4" DIA (44mm) HOLE FOR WASTE LINE
- B = 7/8" DIA (22mm) HOLE FOR WATER SUPPLY TUBE
- C = 7/8" DIA (22mm) HOLE FOR OPERATING CABLE
- D = 1/4" DIA (6mm) HOLES FOR MOUNTING PLATE TO WALL